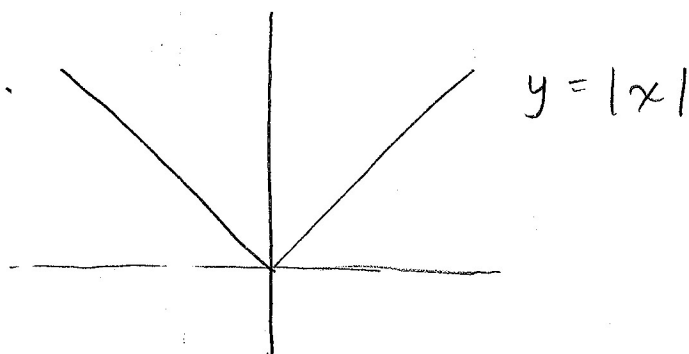


16 FEB 2022

DOMAIN: where a function is defined.

FUNCTION COMPOSITION:  $f \circ g(x) = f(g(x))$



$$\lim_{h \rightarrow 0^-} \frac{|h|}{h} = -1$$

$$\lim_{h \rightarrow 0^+} \frac{|h|}{h} = 1$$

$\lim_{h \rightarrow 0} \frac{|h|}{h}$  does not exist because  $-1 \neq +1$ .