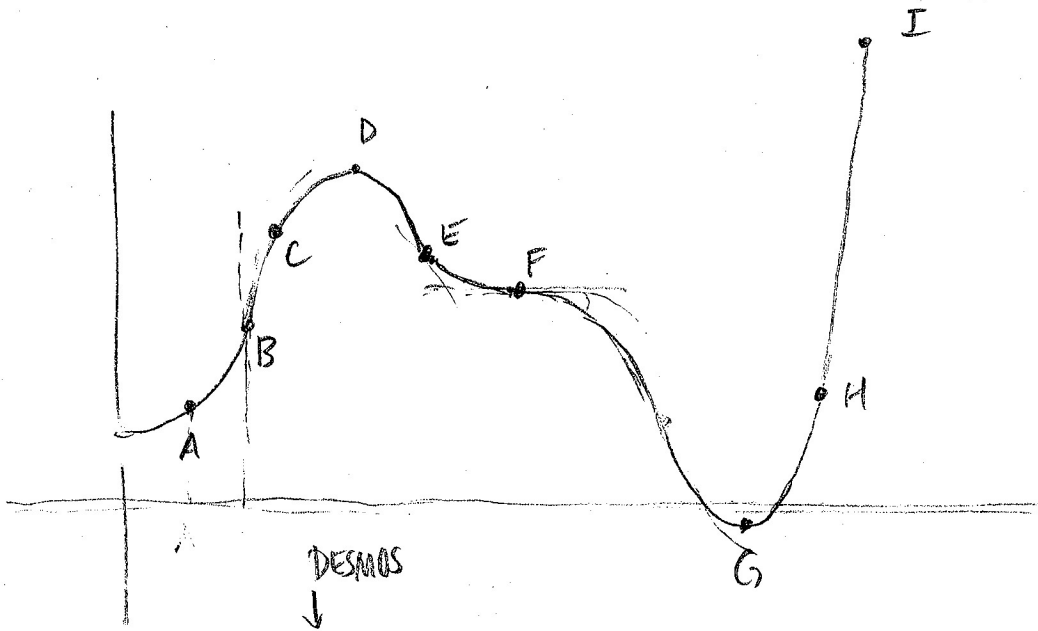


Overview of next several classes



A: $f'(x) > 0$ (\uparrow), $f''(x) > 0$ (CU)

B: $f'(x)$ DNE (vertical tangent), inflection pt. (IP)

C: $f'(x) > 0$ (\uparrow), $f''(x) < 0$ (CD) (CD)

D: $f'(x) = 0$ (horiz. tangent, local maximum), $f''(x) < 0$

E: $f'(x) < 0$ (\downarrow), $f''(x) = 0$ (inflection pt.)

F: $f'(x) = 0$ (horiz. tangent), $f''(x) = 0$ (inflection pt.)

G: $f'(x) = 0$ (horiz. tang.), local min, absolute min,
 $f''(x) > 0$ (CU)

H: $f'(x) > 0$ (\uparrow), $f''(x) > 0$ (CU)

I: absolute maximum